



Ghana-Netherlands  
WASH Programme GNWP



# Project Overview

## GoG-UNICEF Urban Sanitation Project

### 2015-2019

Tseketse-Akuamoah Kweku

July 2018

unicef  | for every child



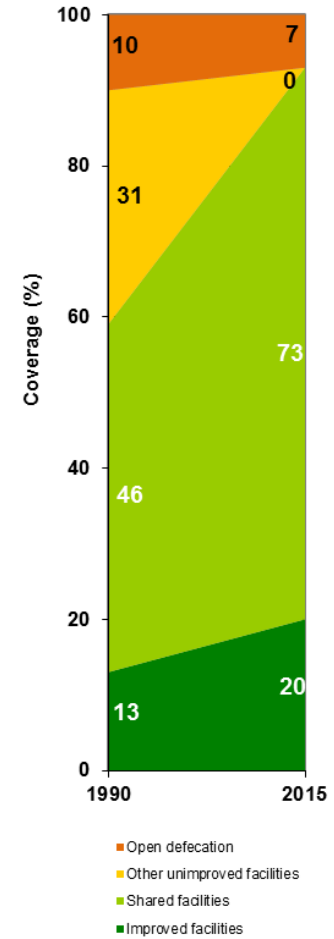
Ghana-Netherlands  
WASH Programme GNWP



# Background and Context



Urban sanitation trends





Ghana-Netherlands  
WASH Programme GNWP



# Project Overview

- Project focusing in three urban MMAs – Ashaiman, Tamale and Ho
- Started in 2015 and will conclude at the end of 2018
- Project aims help 300,000 people use improved toilets, increase access to WASH services in 30 schools, and improve the enabling environment for urban sanitation
- Enabling environment and knowledge management support
- Key outcome of the programme will be the development of the urban sanitation strategy, in collaboration with partners



Ghana-Netherlands  
WASH Programme GNWP



# Key Implementation Methods

- Formative Research
- Demand Creation
- Local Government
- Civil Society
- Private Sector
- Law Enforcement
- National Strategy Development
- Financing





Ghana-Netherlands  
WASH Programme GNWP



# Some Outputs...



## ASSESSMENT OF WASTE WATER TREATMENT PLANTS IN GHANA

Civil Engineering Departm  
KNUST



## UNICEF ASSESSMENT AND DEVELOPMENT OF SANITATION TECHNOLOGY OPTIONS MANUAL FOR URBAN AND PERI -URBAN AREAS

Civil Engineering Department  
KNUST



## LATRINE TECHNOLOGY MANUAL



### REVISED INCEPTION REPORT

RFP No: 9124433

AN ASSESSMENT ON AFFORDABILITY OF WASH SERVICES AT  
ASHAIMAN, HO AND TAMALE METROPOLIS

Submitted to:

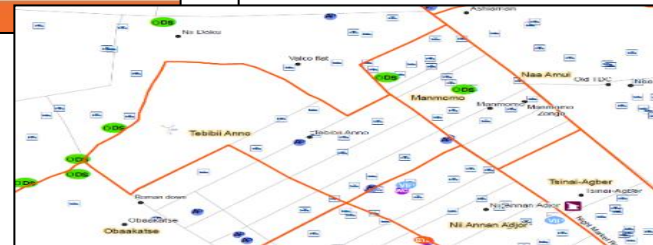
UNICEF Ghana

By:

CAFORD Consult

cafordconsult@gmail.com

+233(24) 6623 932/+233(20) 8004 800





Ghana-Netherlands  
WASH Programme GNWP



# Behaviour Change Approaches

- Project focused on trialing three demand creation approaches – urban-CLTS (Tamale), CLUES (Ashaiman), CDH (Ho)
- Social Norms campaign
- Relative success in terms of increasing demand – but supply issues?



Ghana-Netherlands  
WASH Programme GNWP



# Sanitation and Treatment Technologies

- Support given to number of artisans/entrepreneurs on business plan development, and training on technology
- Technology handbook developed via KNUST partnership
- Trial of digester model with multiple connections
- Promoting existing brands such as Sama-Sama (Tamale)
- Challenge remains around the cost of sanitation options, compared with affordability study findings
- Considering service based model options that fit with households existing payment patterns for public toilets



Ghana-Netherlands  
WASH Programme GNWP



# Business Development and Financing

- Business development worked with trained artisans/ entrepreneurs who have developed 15 business plans
- Technology work collaborating WASHKING and Eco-Safe
- Financing has linked with P2P project, but also finalizing agreement with APEX Bank to work with Rural Banks
- APEX Bank partnership aims to overcome the challenge of high interest rates AND strict lending criteria
- Targeting of poor households in urban areas is a challenge for pro-poor support, continuing efforts





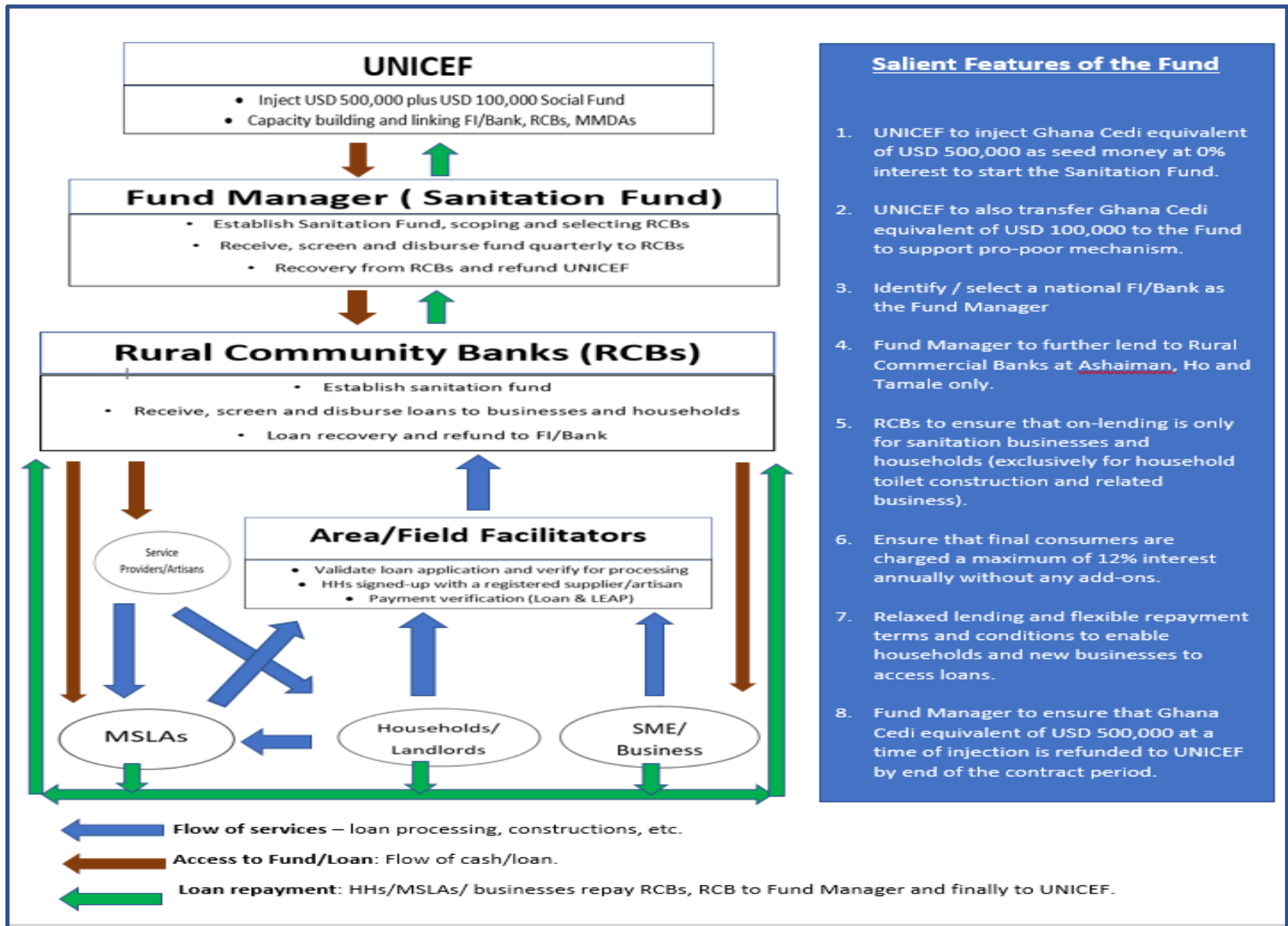
Ghana-Netherlands  
WASH Programme GNWP



# WASH Governance and Regulation

- Support on reviewing and monitoring the MESSAP documents for the three MMAs
- Additional support to MMAs via deployment of resource persons as additional technical support
- Support of key research to increase knowledge base
- Training in Feb/Mar on technology includes PPP methods
- Urban Sanitation Strategy development
- Supported development of urban ODF protocol
- Challenge remains with lack of clear policies around key issues such as subsidies, public toilets and ODF status

# Proposed Finance Arrangement



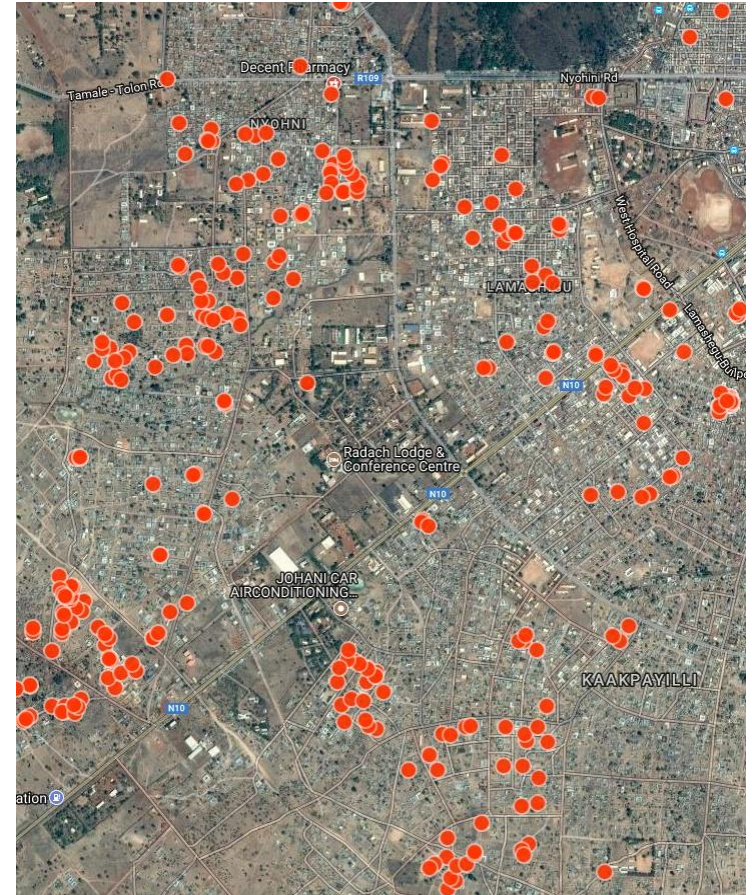


Ghana-Netherlands  
WASH Programme GNWP



# Monitoring and Evaluation

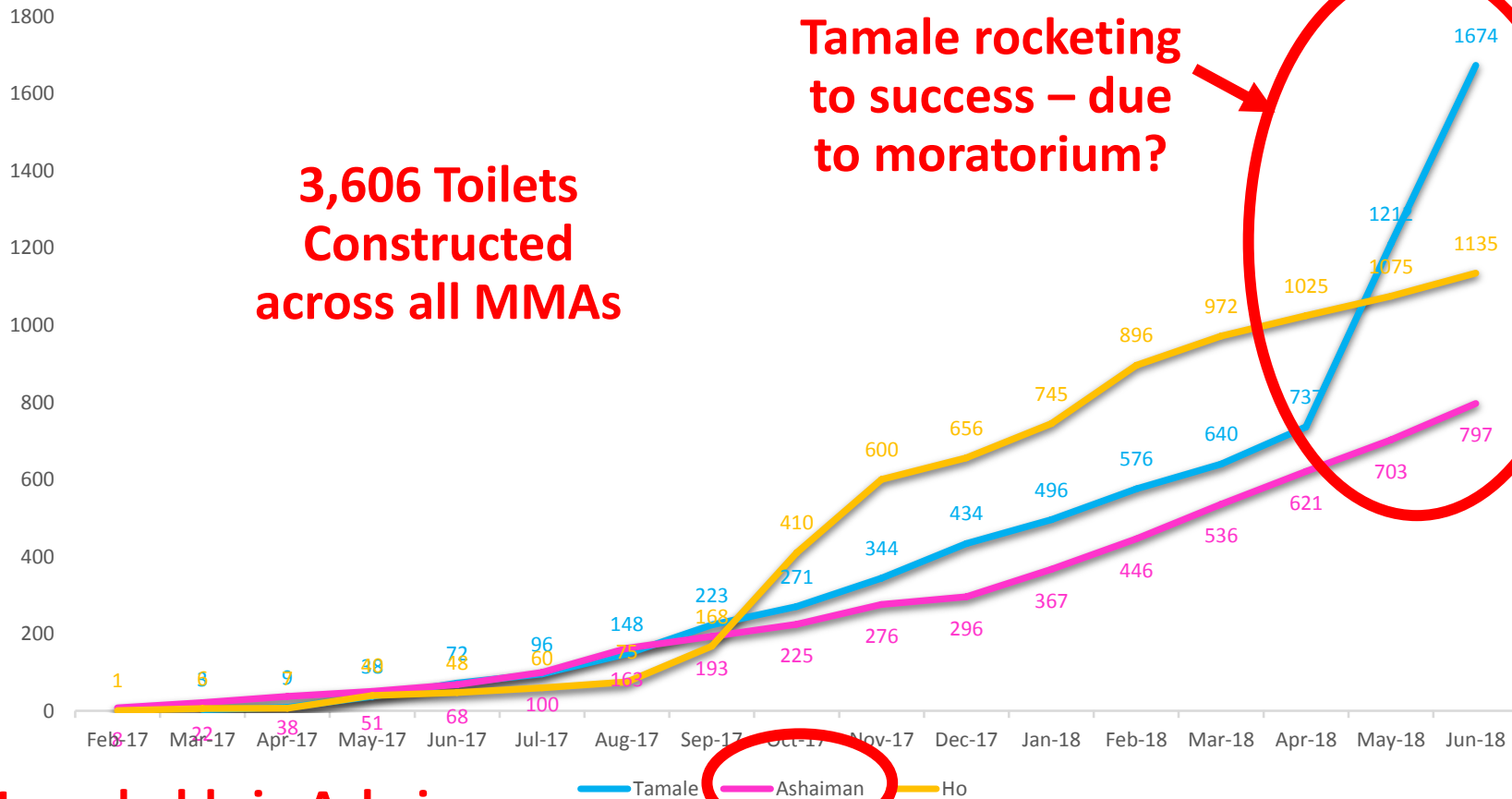
- Development of monthly monitoring systems for project
- Use of Kobo Collect to track constructed toilet facilities
- GIS support has helped to map out zones and other boundaries
- Challenge is systems are project based
- Requirement for better tracking at sub-MMA level





# Results

## Toilet Construction completed (Cumulative) to end June 2018



**3,606 Toilets Constructed across all MMAs**

**Tamale rocketing to success – due to moratorium?**

**Households in Ashaiman benefit from GAMA subsidy**



# Results

Daily Graphic, Wednesday, June 6, 2018. #STOP SUCAMSE Visit [www.graphic.com.gh](http://www.graphic.com.gh) Politics 19

## TaMA to enforce sanitation by-laws

**By Mohammed Fugu, TAMALE**

**T**HE Tamale Metropolitan Assembly (TaMA) has constituted a task force to enforce sanitation by-laws in the metropolis.

The task force, to be deployed on the streets, communities and in all homes, is expected to work day and night to arrest and impose spot fines on people who defecate in the open, as well as landlords who failed to construct toilet facilities in their homes after the end of a moratorium declared by the assembly.

Persons who are found culpable and fail to pay the spot fine will be processed for court.

**Extension of moratorium**

The assembly has also extended its four-month moratorium

which was declared for landlords to construct household toilets by the end of May 2018; it has given an additional two weeks to those who could not construct within the period to do so.

The acting Coordinating Director of the TaMA, Mr Abdul-Rahaman B. Ahmed, disclosed this at a press conference in Tamale last Friday.

He said the extension of the moratorium was due to the numerous concerns received by the assembly and the low enthusiasm and interest for some landlords to construct toilet facilities.

"The metropolitan

**"A task force is being constituted to be deployed across the length and breath of the metropolis to locate non-compliant landlords and issue summons to them".**

• Musa Superior — MCE TaMA

assembly has noted some minimal level of enthusiasm and interest on the part of some landlords to construct toilets in their homes, for which reason the assembly will allow two weeks grace period beginning from June 1

to June 14, 2018 as a last opportunity for those who could not construct within the period to do so," he stated.

Mr Ahmed urged all landlords in the metropolis to comply with the directive at risk being fined and processed

for court by the task force.

"A task force is being constituted to be deployed across the length and breath of the metropolis to locate non-compliant landlords and issue summons to them and process them for court," he stated.

**Sensitisation**

Mr Ahmed indicated that the assembly would embark on a sensitisation programme on various media platforms within the two weeks period to educate residents on the relevance on the by-laws on sanitation and household toilets.

It is also expected to further whip up public interest and enthusiasm for the construction of household toilets in the metropolis.

He has, therefore, appealed to the chiefs, clergy and other relevant stakeholders to support the assembly to improve on sanitation in the metropolis.

**Public toilets**

Touching on the construction of public toilets, the Public Relations Officer of the Assembly, Mr Issah Salifu Musah, said the assembly had stopped constructing toilet facilities for residents per the new directive by the government, but it would rehabilitate all existing ones in the metropolis for public use.

He stressed that the assembly's enforcement drive had no political colour and would be enforced to the letter, as the sanitation issues in the metropolis were mainly an attitudinal problem.



Ghana-Netherlands  
WASH Programme GNWP

# Challenges



- Lack of affordable financing options
- Lack of supplier capacity to deliver on project targets
- High cost of approved technology options
- Suitable post moratorium mechanisms
- Affordability assumption questioned by MTR
- Political will crucial to success
- Requirement for more QA from MMAs
- High water bill is posing a challenge for schools
- High project targets (later revised down)

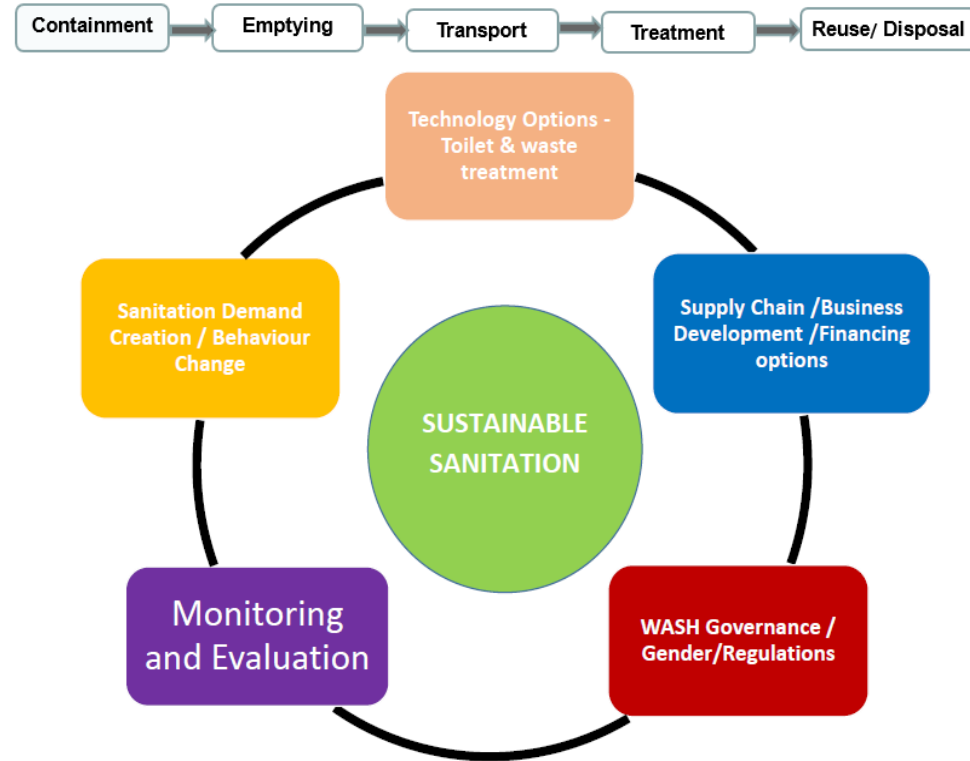




# Next Steps



- Project ends Dec 2019
- Finalise national model/strategy
- Achieve revised household toilet target
- Monitor financing (+)
- Continue to maintain momentum
- Document learning and successful approaches





Ghana-Netherlands  
WASH Programme GNWP



# Questions?

