

District based initiative for SDG6: building country systems, leveraging partnerships

The Case of Asutifi North District in the Brong Ahafo Region, Ghana

Presented by:

Hon. Anthony Mensah, District Chief Executive

Mr. George Padmore Mensah, District Co-ord. Director

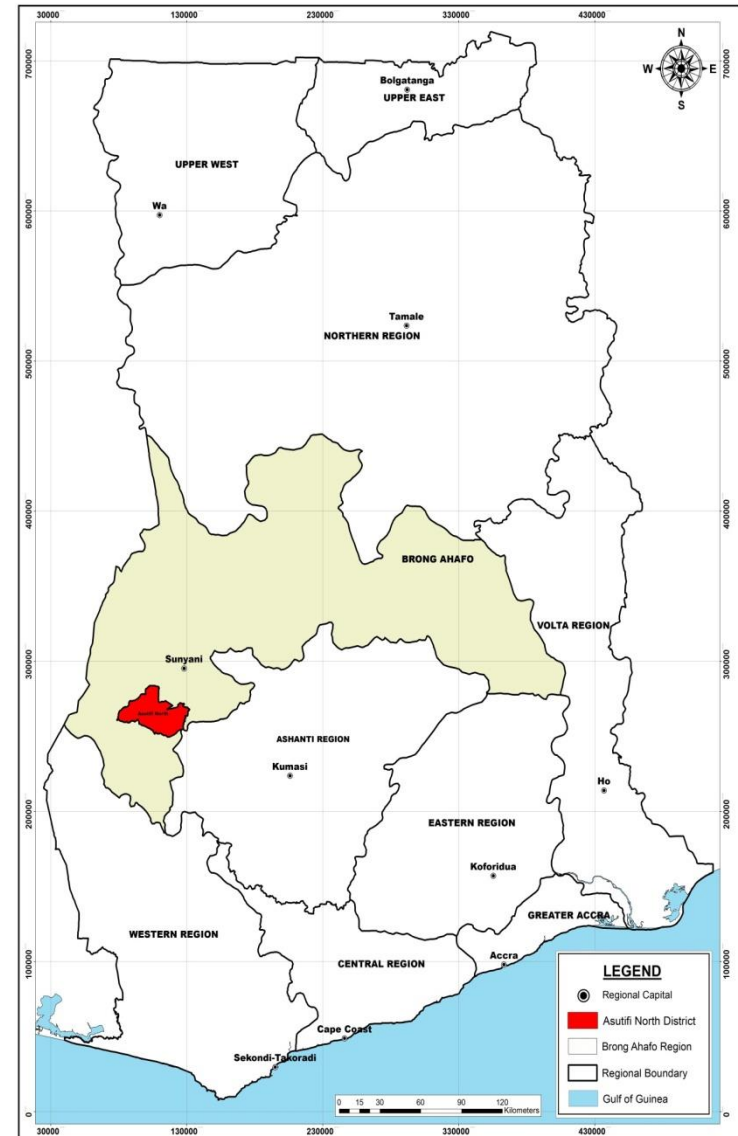
Mr. Ata-era A. James, District planning officer

OUTLINE OF PRESENTATION

- District profile
- WASH governance issues
- Baseline situation
- Goal of the wash initiative
- Targets of the initiative
- Ghana WASH situation
- Map on spatial distribution
- Total cost of delivering of wash
- Strategies
- District Financing Arrangements
- Conclusion

DISTRICT PROFILE

- Asutifi North District is located in the South western part of Brong Ahafo.
- Created under L.I. 2093 of 2012
- The population is estimated at 62,817; Rural population 68%, and urban 32%
- Agrarian economy employing 58%. Now a shift to mining, services and industry.
- Strong private sector and Strong traditional institutions
- Growing urban population with increasing demand for high WASH service



WASH Governance Issues



institutional

- Coordination
- finance
- Accountability mechanisms
- Feedback and reporting



IWRM and water quality

- climate change issues
- Absence of transboundary water governance framework
- Water quality Deterioration



Behaviors and attitudes

- weak enforcement of rules & laws
- Poor personal attitudes to WASH

Baseline situation



Overall Drinking water

3% safely managed
52% basic
14% limited
31% unimproved



WASH in Schools-WATER

24% basic
76% unimproved



WASH in Schools-SANITATION

80% Basic
20% Unimproved



Overall SANITATION

0% Safely managed
16% Basic
18% Shared
62% Unimproved
4% No Service

Goal of the WASH initiative

Every person in Asutifi North district will have access to sustainable safe water, sanitation and hygiene services in a conducive environment where water resources are sustainably managed



TARGETS of the initiative

By 2030, every person in Asutifi North have access to basic water services, 50% of urban and 15% of rural households will have access to water on premise

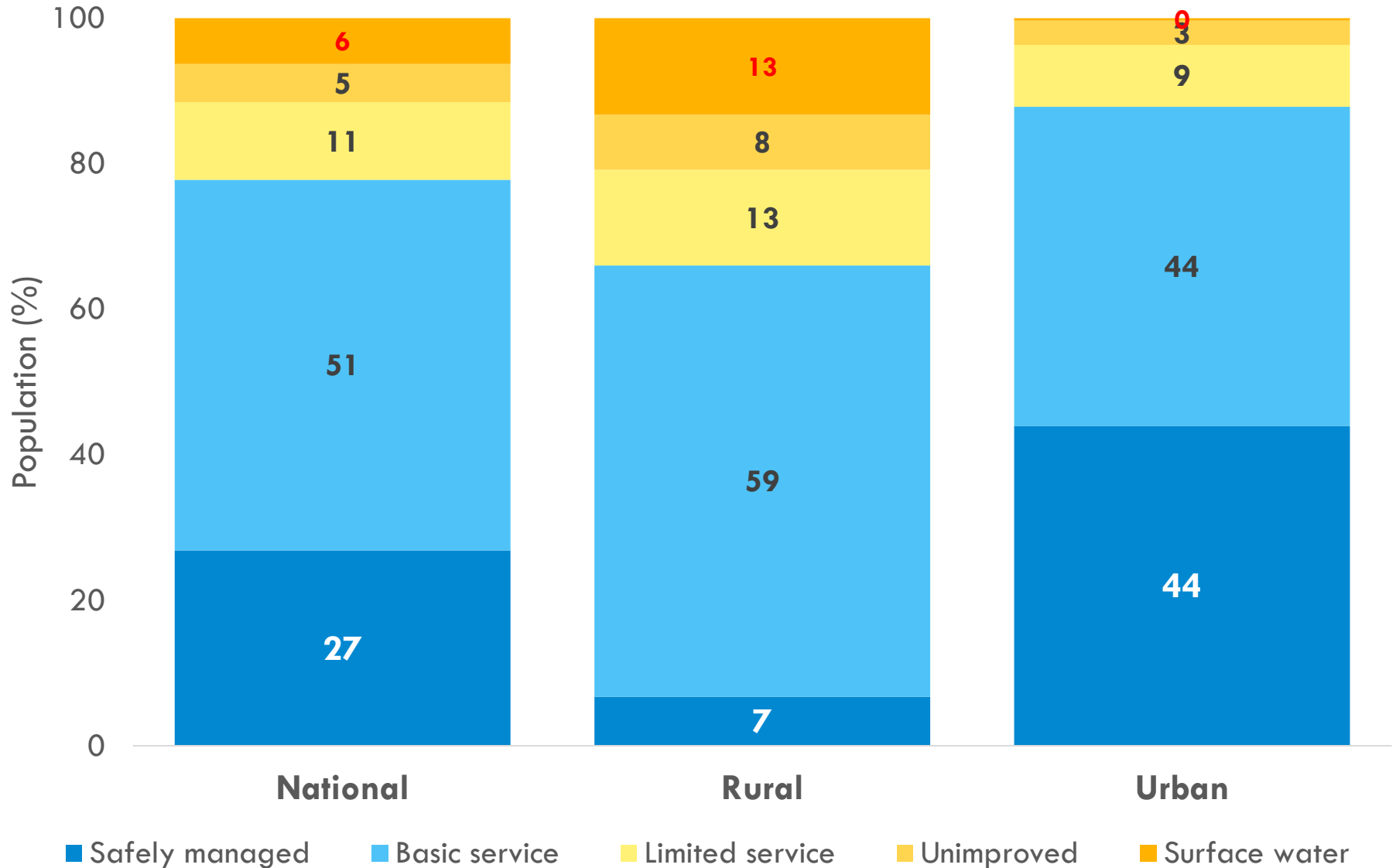
All educational and health institutions have access to basic water, sanitation, hygiene services on site;

Every person has access to safe sanitation coverage (access to safe toilet) for all (100%); 40% improved management of greywater /faecal sludge;

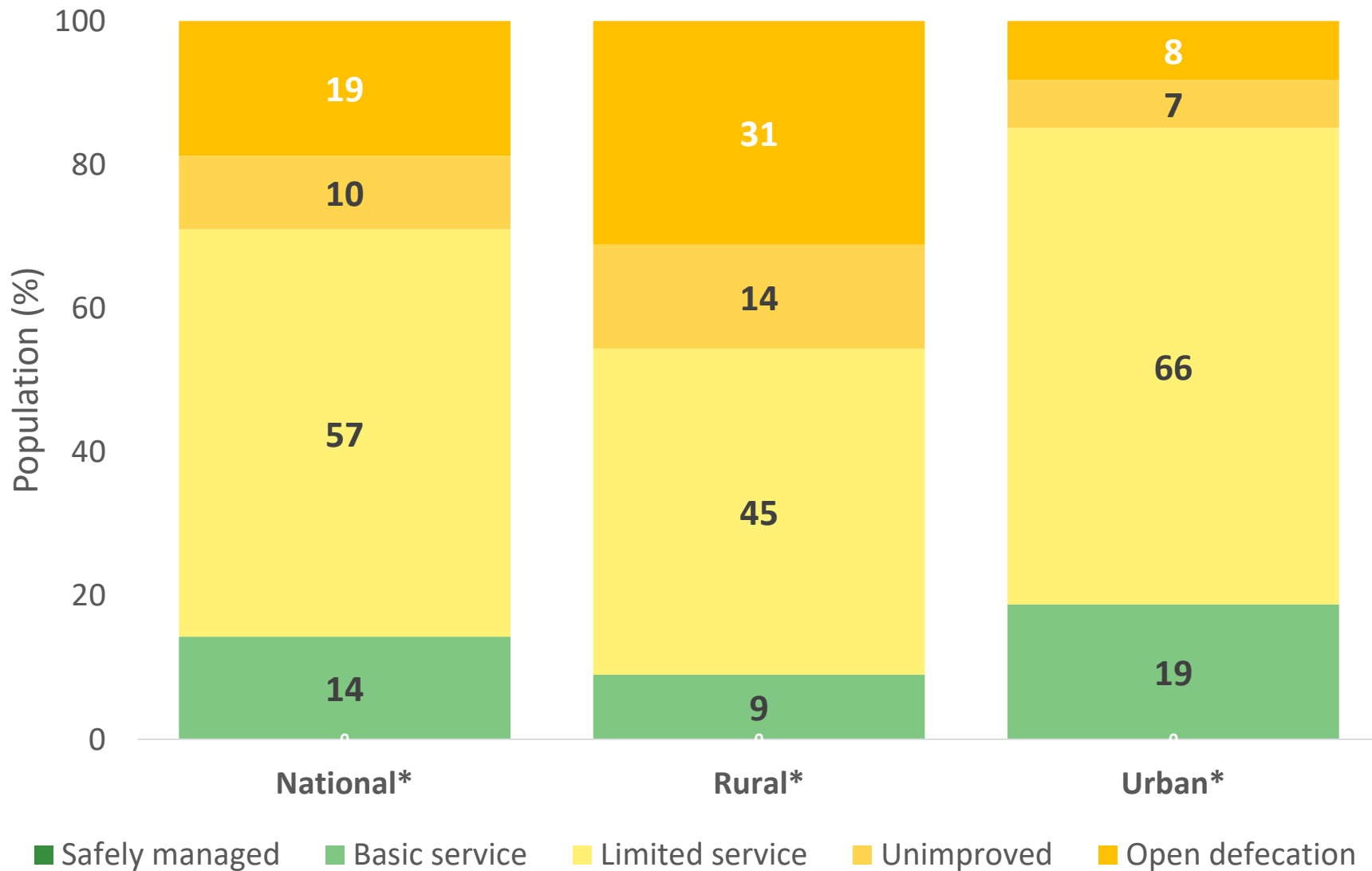
IWRM strategies successfully implemented to ensure sustainable water Quality;

Robust and effective water and sanitation governance systems to ensure sustainable services.

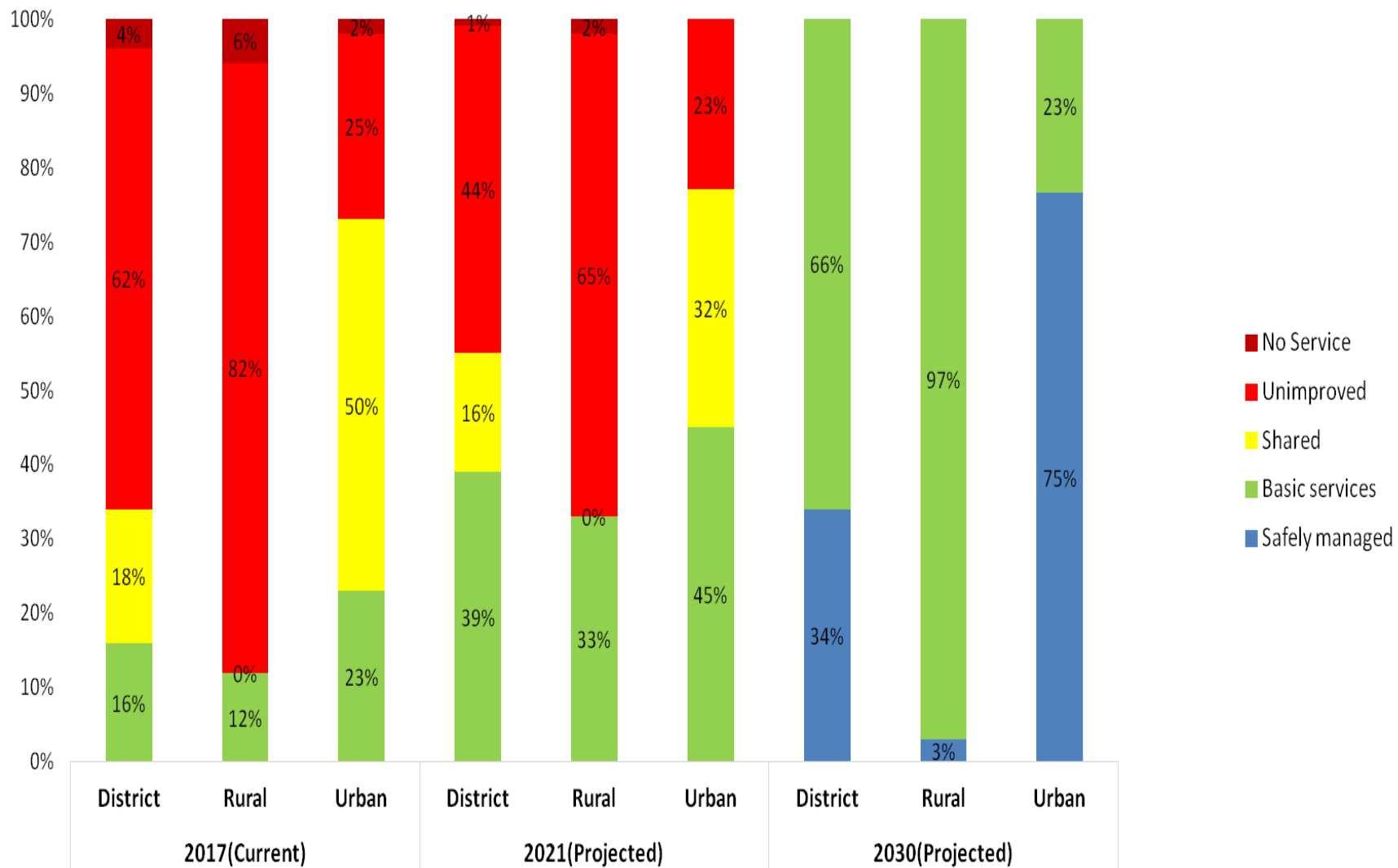
JMP 2017 Ghana Drinking Water



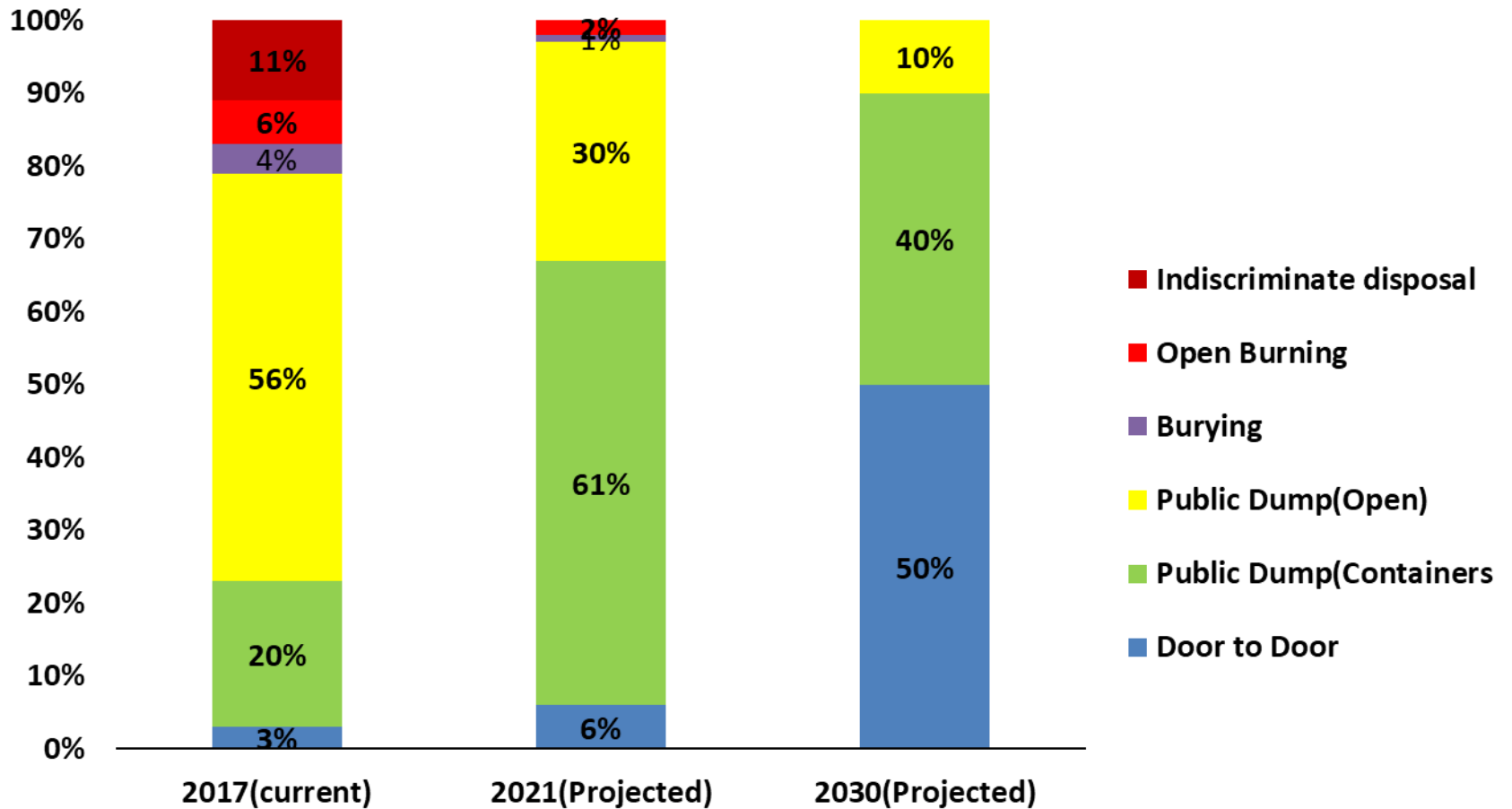
JMP 2017 Ghana Sanitation



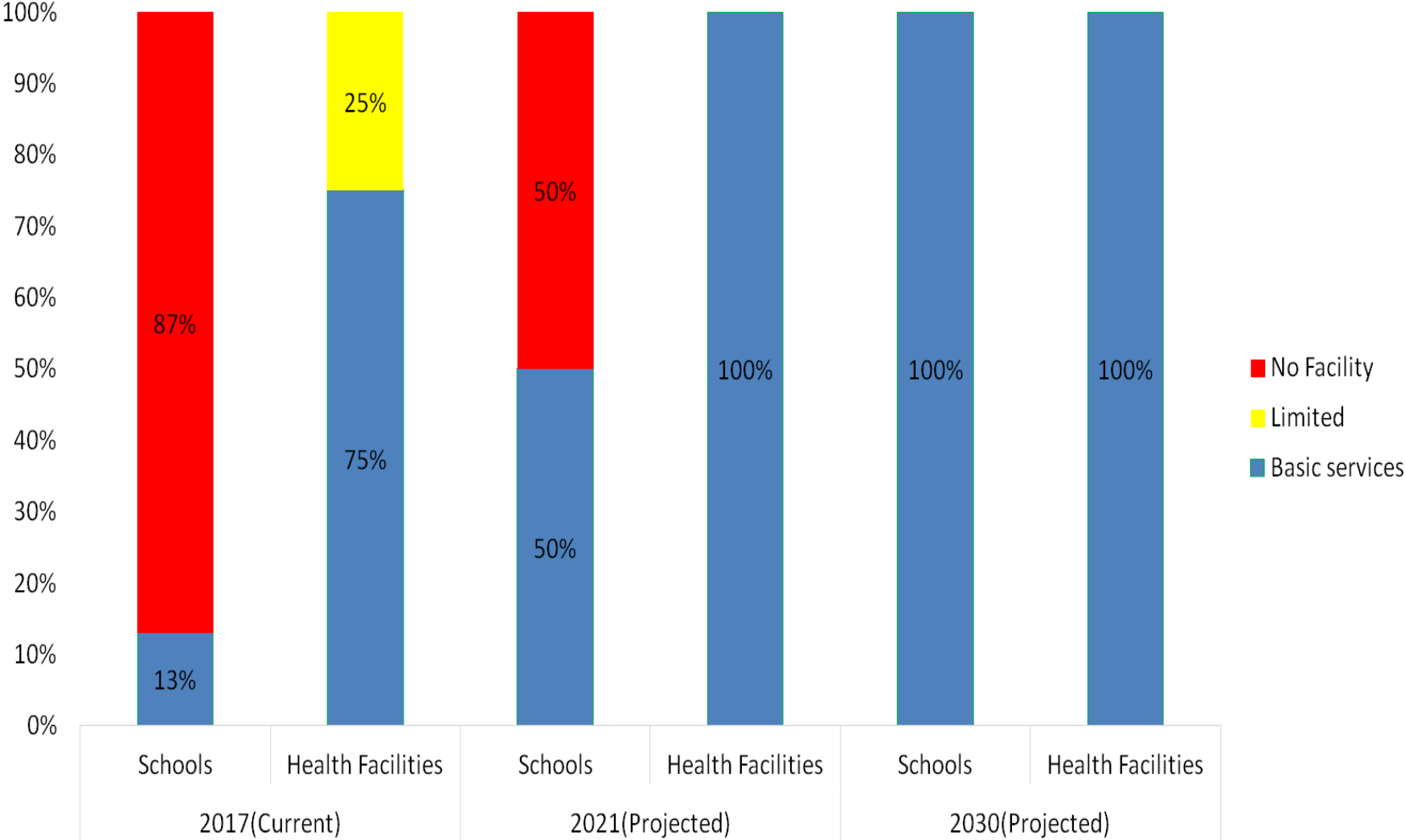
Sanitation service- liquid-current and projected



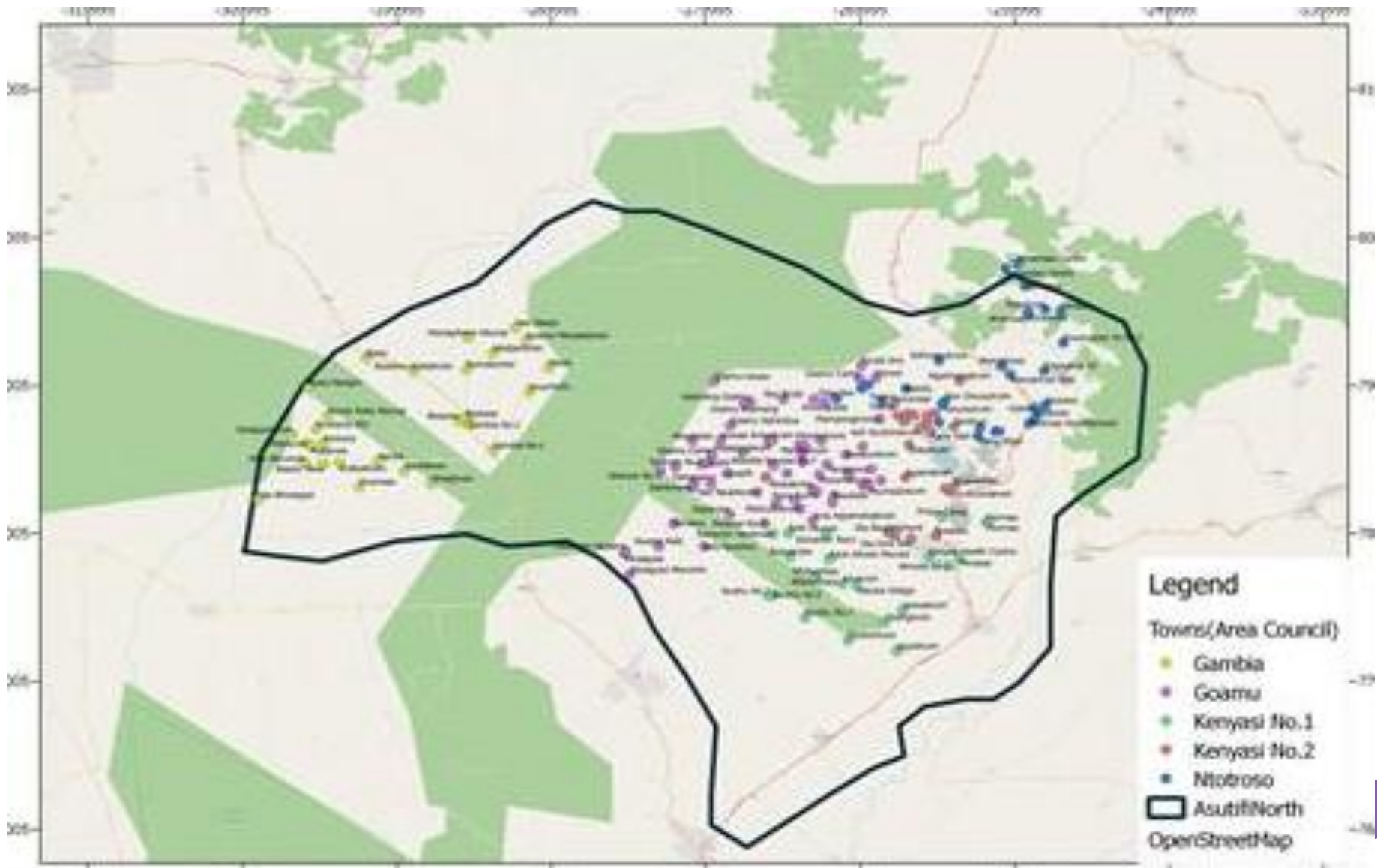
Sanitation service-solid-current and projected



Hygiene service in institutions-current and projected



MAP SHOWING SPATIAL DISTRIBUTION OF WATER FACILITIES AND UNSERVED COMMUNITIES



Strategies

National(Goal)

- Creating an equitable, healthy and discipline society
- Building safe and well-planned communities while protecting the natural environment

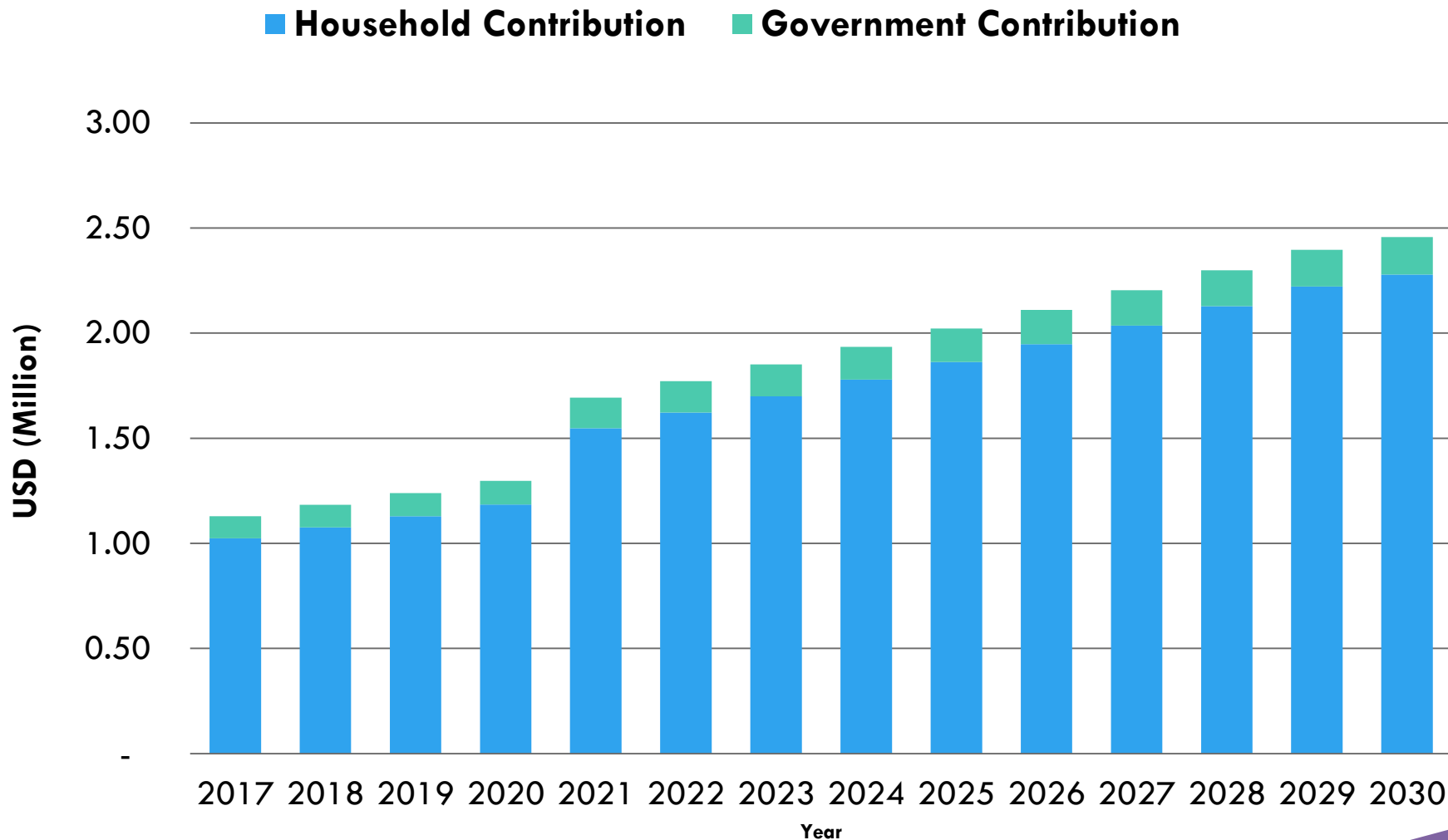
District

- **Service delivery**
 - Strengthen sub-district structures
 - Strengthen private sector to deliver services
 - Empower CSOs and Traditional Authorities for effective advocacy
- Select appropriate technologies and delivery models to deliver services to unserved areas
- **Institutional support**
 - Coordination and harmonization of planning, investments, budgeting and monitoring and evaluation of interventions by all stakeholders for effective delivery of WASH services.
 - Enhance transparency and social accountability for effective service delivery

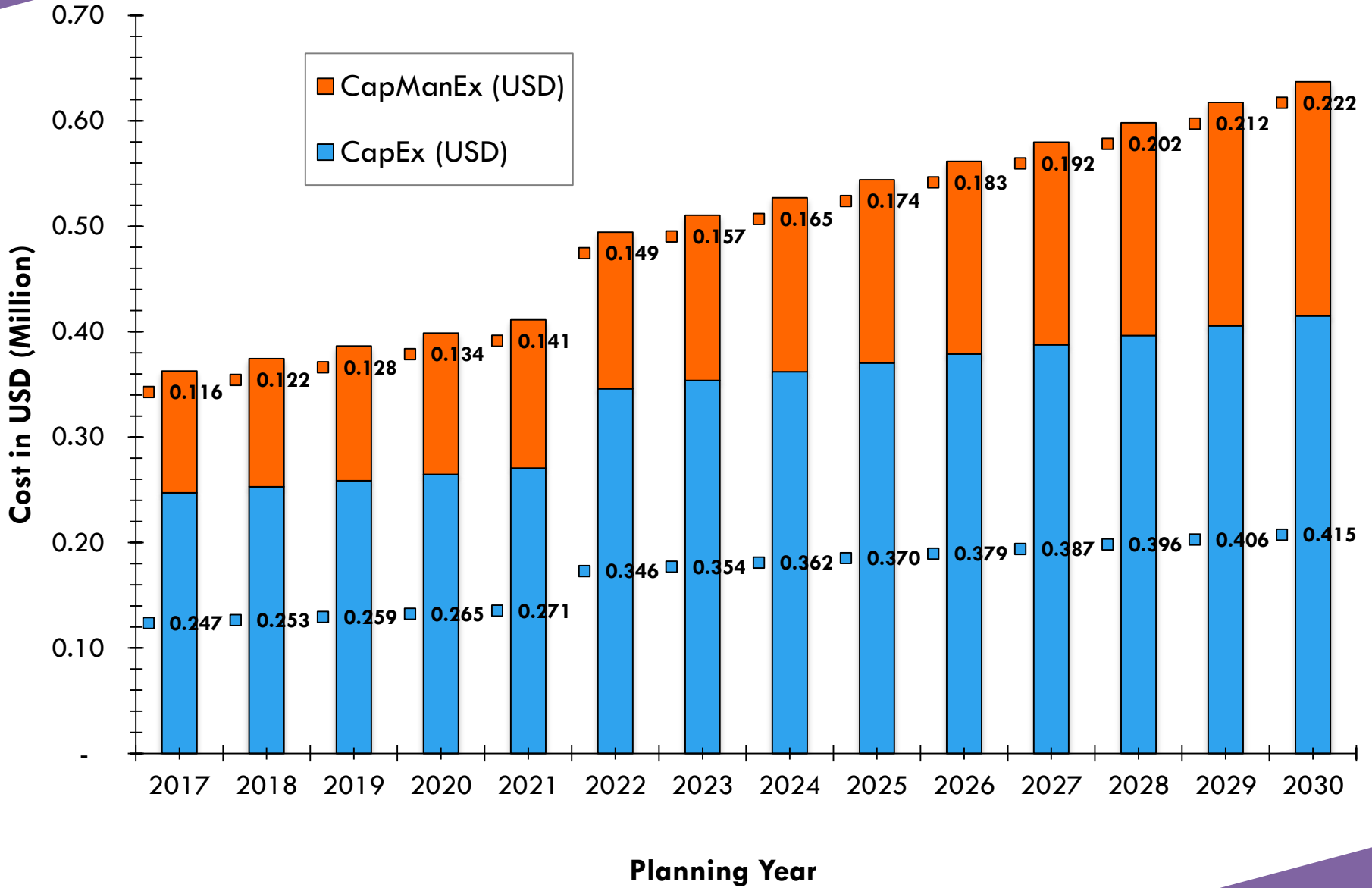
District

- **Enforcement of rules and regulations**
 - Ensure compliance with community byelaws
 - Formation of Sanitation Brigade to prosecute sanitation offenders
- **Resource mobilization**
 - Develop new means of tariff setting and regulation to ensure inclusiveness
 - Engagement of key stakeholders including Development Partners, Diasporas from Ahafo on a road show

Cost of achieving Sanitation SDGs in Asutifi North District (2017-2030)



Cost of achieving Water SDGs in Asutifi North District (2017-2030)



Total Cost of delivery WASH services in Asutifi North District

- **Medium Term Target (2017-2021)**

- Water -6.45 million USD
- Sanitation – 1.96 million USD

Sub-Total – 8.41 million USD

- **Long term (2017-2030)**

- Water – 7 million USD
- Sanitation – 25.35 million USD

Overall Total- 32.35 million USD

Current status of District wash financing

Sources of Fund	2014	2015	2016
DACF	71,380.40	87,779.71	356,711.16
DDF	-	7,613.11	11,634.72
Royalties	32,222.41	47,852.29	72,146.34
IGF	4,293.78	5,006.89	14,030.25
Total WASH Expenditure	107,896.59	148,274.23	454,522.48
Total District Expenditure	961,719.72	1,348,861.56	1,785,394.04
Percentage to total Expenditure	11.22	11.00	25.45

District financing arrangements

Financing of WASH services Provision

Sector	Type of Expenditure	Source of Funds
Water	Capital Expenditure	DA-(DACF, DDF, Royalties etc.) Development Partners Private Sector(Newmont, NADeF etc.) GoG Private Persons
	Operations and Maintenance Expenditure	Pay as you fetch DA Subsidy Household Levies Monthly Meter Billing
	Monitoring and Evaluation Cost	DA-(DACF, IGF etc.)
Sanitation	Capital Expenditure	DA-(DACF, DDF, Royalties etc.) Private Sector(Newmont, NADeF etc.) Private Persons
	Operations and Maintenance Expenditure	Pay as you use, DA, GoG
	Monitoring and Evaluation Cost	DA (DACF, IGF etc.)

Conclusion

- WASH service has become a basic necessity of life and every efforts should be made to ensure safe WASH services are provided to the populace.
- The achievement of the targets and the SDG 6 is not an easy task. Resources will be needed to implement the programmes and projects outlined in the master plan.
- The Assembly, IRC Ghana, Safe Water Network, World Vision International, NADeF, Newmont Gold Ghana Limited and the Conrad N. Hilton Foundation would therefore call on you here to fully pledge your support towards the successful implementation of this master plan.

THANK YOU FOR YOUR
ATTENTION